

Algebra I

7.2 Worksheet

Solving Systems by Graphing

NAME: Key
DATE: _____ HOUR: _____

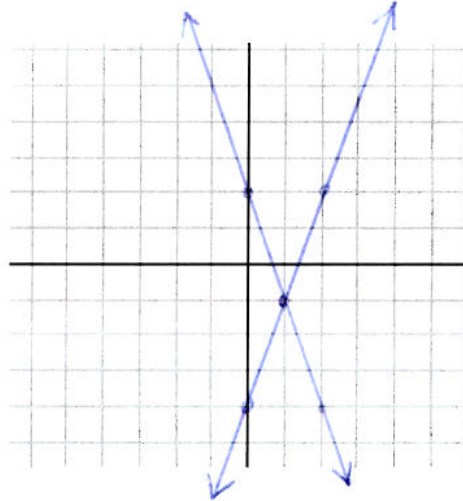
Graph each line of the system to determine the solution then check your solution.

1.
$$\begin{cases} y = 3x - 4 \\ y = -3x + 2 \end{cases}$$

solution: $(1, -1)$

check:

$$\begin{cases} (-1) = 3(1) - 4 \\ (-1) = -3(1) + 2 \end{cases}$$

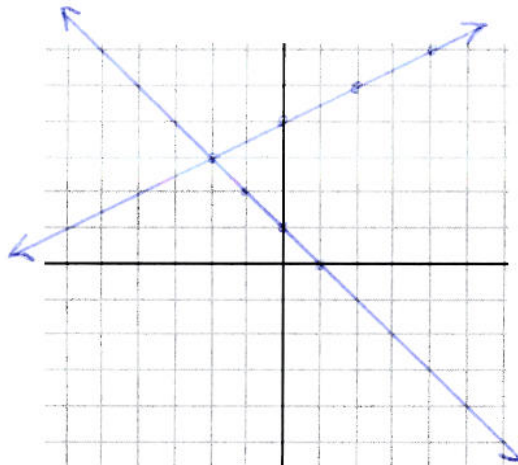


2.
$$\begin{cases} y = \frac{1}{2}x + 4 \\ y = -x + 1 \end{cases}$$

solution: $(-2, 3)$

check:

$$\begin{cases} (3) = \frac{1}{2}(-2) + 4 \\ (3) = -(-2) + 1 \end{cases}$$

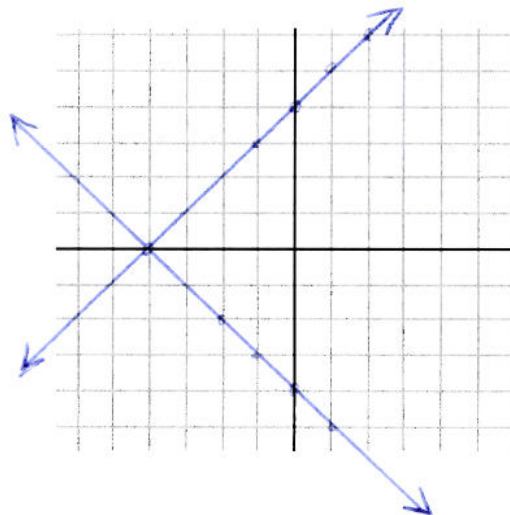


3.
$$\begin{cases} y = x + 4 \\ y = -x - 4 \end{cases}$$

solution: $(-4, 0)$

check:

$$\begin{cases} (0) = (-4) + 4 \\ (0) = -(-4) - 4 \end{cases}$$

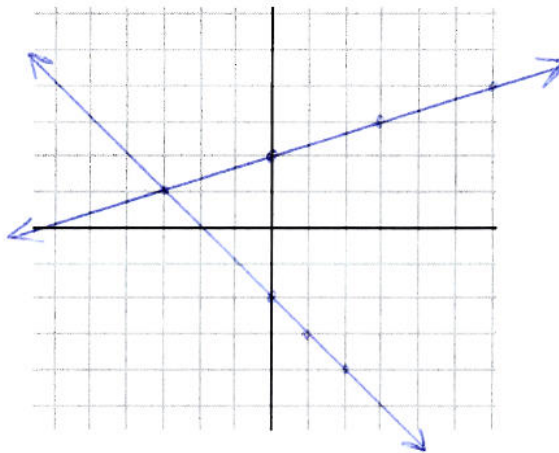


$$4. \begin{cases} y = 1/3x + 2 \\ y = -x - 2 \end{cases}$$

solution: $(-3, 1)$

check:

$$\begin{cases} (1) = 1/3(-3) + 2 \\ (1) = -(-3) - 2 \end{cases}$$

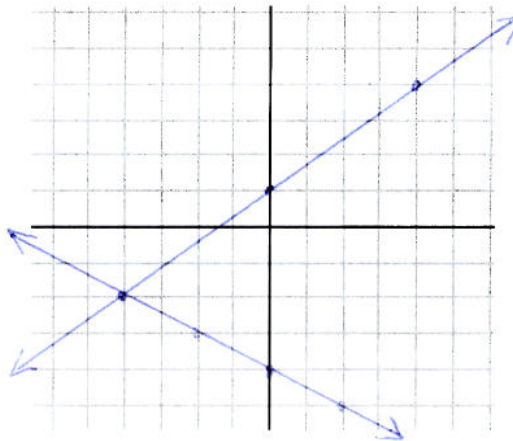


$$5. \begin{cases} y = -1/2x - 4 \\ y = 3/4x + 1 \end{cases}$$

solution: $(-4, -2)$

check:

$$\begin{cases} (-2) = -1/2(-4) - 4 \\ (-2) = 3/4(-4) + 1 \end{cases}$$

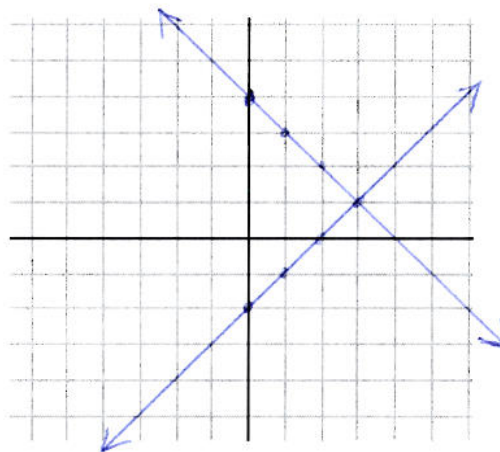


$$6. \begin{cases} y = x - 2 \\ y = -x + 4 \end{cases}$$

solution: $(3, 1)$

check:

$$\begin{cases} (1) = (3) - 2 \\ (1) = -(3) + 4 \end{cases}$$



$$7. \begin{cases} y = -x + 2 \\ y = x - 4 \end{cases}$$

solution: $(3, -1)$

check:

$$\begin{cases} (-1) = -(3) + 2 \\ (-1) = (3) - 4 \end{cases}$$

